



CORPORATE PROFILE

2025

AMBER GROUP Biz VERTICALS



Consumer Durables

1. **RAC (Room Air Conditioners)**
2. **RAC Components**
 - Heat Exchanger
 - Copper Tubing
 - Cross Flow & Axial Fans
3. **Non-RAC Components**
4. **Injection Moulding**
5. **Sheet Metal Components**
6. **Motors**
7. **Tools for Injection Moulding**

23 Manufacturing Facilities

29
Manufacturing
Facilities

Mobility

1. **Railways & Metro**
 - Coach HVAC System
 - Gangway & Doors
 - Pantry & it's equipment
2. **Buses:**
 - HVAC System
 - Power Racks
3. **HVAC for Defence**
4. **HVAC for Telecom & IT**
5. **Refrigeration & Cold Room Systems**

01 Manufacturing Facilities

13000 +
Employees

Electronics

1. **Electronics Manufacturing Services**
 - Consumer Durables
 - Smart Electronics
 - Industrial, Defence & Aerospace
 - Automotive
 - Telecom
2. **Components**
 - Multi layer Rigid PCBs : Up to 16 Layers
 - Flexible PCBs
 - HDI PCBs : from Yr.2026

05 Manufacturing Facilities

\$ 1.2 Bn
Revenue FY 24-25

Vision and Mission Statement



VISION, MISSION & PHILOSOPHY

Vision:

- ✓ To be first **choice** of customers
- ✓ Add value to their business
- ✓ Through Discipline & Strong Management Principles.

Mission:

- ✓ To be No. 1 OEM & Parts manufacturing company.
- ✓ Through excellent services to our customers
- ✓ Create Growth for all associated with our organization.

Philosophy:

- ✓ Smart Working, Innovation, Happiness for all

Value:

- ✓ Good Intention

SHARED VALUES

“GOOD INTENTIONS”

- **Fighting Spirit**
- **I am responsible**
- **Respect for Human**
- **Strong Management Principles**
- **Transparent**
- **Continuous Innovation**
- **Hardworking & Sincere**
- **Ownership**
- **Inclusive Growth**
- **Customer First**
- **Ethical Always**

Our Footprints



Geography

- ❖ 29 Manufacturing Facilities across 8 sates
- ❖ Corporate office in Gurgaon, India
- ❖ 3 R&D Centres:
 - Rajpura – Consumer Durable
 - Greater Noida – Electronics
 - Faridabad – Motors
- ❖ 3 Sales Office:
 - USA, Illinois
 - Middle East, UAE
 - Bangalore, MG Road

Our Scale

- ❖ Commodity Processing scale per annum
 - 45,000MT Steel
 - 10,000 MT Copper
 - 5,000 MT Aluminium
 - 10,000 MT Resin
- ❖ 3mil Aircon per annum
- ❖ 3.5 Mil Motors per annum
- ❖ Indian railways HVAC nearly 50% of the market
- ❖ Printed Circuit Board Assembly 50mil per annum
- ❖ Bare Printed Circuit Board 30,000 Sq.m Multi Layer (Upto 16 Layer) and 30,000 Sq.m of single sides





06 Refrigeration & Cold Room Systems

- Commercial Pantry, Refrigerators & Freezers.
- Cold Room Application, Low & Medium Temperature Refrigeration System



01 Main line Rail AC

- Saloon HVAC Systems For LHB Coaches,
- LOCO CAB AC's
- HVAC for TS 18 Project (Saloon & CAB)
- Roof Mounted Ventilation Units
- Modular Pantry units
- Gangways
- Doors (Internal & External)
- Interiors
- Switch Board Cabinets



05 Telecom & Precision AC's

- Precision AC's for Telecom Sector
- High Sensible AC's
- UPS Room AC
- Very High Ambient AC's



02 Metro Rail AC

- Saloon HVACs (38 KW to 60 KW)
- CAB HVACS
- Offering Solutions with high COP
- Gangways
- Doors
- Interiors



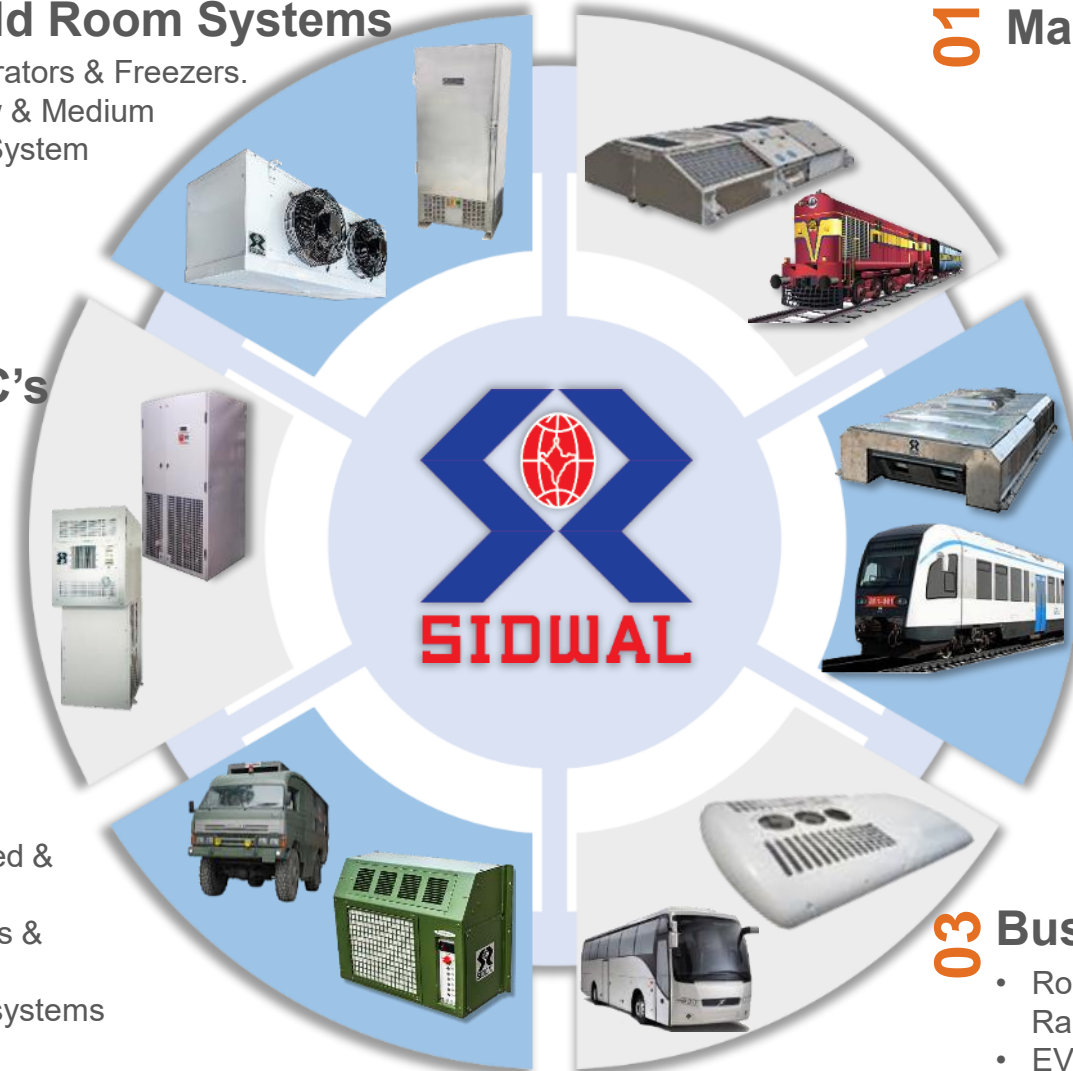
04 Defense Systems

- **MIL Grade ACs** For Wheeled & Traced Vehicles & Shelters
- **APU, ACU & ICCS** for Tanks & armored Vehicles
- **TCU** for Missile Launching systems



03 Bus AC Systems

- Roof Type Designs (Ambulance~ Sleeper busses) Range-5 KW to 50KW
- EV-Bus -9M & 12M (28 & 40 KW)
- Sleek Designs For Ambulances & Defense Jeeps



The background of the entire image is a complex, abstract pattern of blue lines and shapes, resembling a circuit board or a network diagram. The lines are of varying thicknesses and are interconnected by small circles and squares, creating a dense, web-like structure that fills the entire frame.

INTEGRATING ELECTRONICS



IL JIN Electronics Division



06 Bare PCB

- Single Layer
- Multilayer upto 16 layers
- Aluminum PCB
- Flex PCB
- RF PCB

05 Industrial & Defence

- AS9100D Certified
- Tactical optics electronics
- Energy meter
- Solar microinverter
- Solar pumps
- EV chargers

04 Automobile

- IATF 16949 approved
- Cluster PCBAs
- Vehicle tracking system
- Power Window PCBA
- Motor controller PCBA

01 Consumer Durable PCBA

- Inverter Aircon PCBA: Contributing to 26% of the total PCBA produced in the country
- Washing machine PCBA
- Refrigerator PCBA
- TV PCBA
- Microwave PCBA

02 Telecom

- TL 9000 Certified
- Electronics for 4G/5G radio Base band units
- Remote radio heads
- ONT GPON Router for Wifi-4
- ONT GPON Router for Wifi-5
- Set-top Box

03 Smart Electronics

- Smart watch
- TWS
- Audio



ISO 9001:2015
Quality Management System



ISO 14001:2015
Environmental Management system



ISO 45001:2018
Occupational health and Safety



IATF/TS 16949
Quality management system - Automotive



AS 9100:2016
Quality management system - Defence



ISO 27001
Information security management system



Quality management system - Telecom



Electrostatic discharge compliance

ILJIN TIMELINES



ILJIN ELECTRONICS
Established

2001



Factory Setup
Gr. Noida
100,000 Sq Feet

2010



EVER Electronics
Pune
80,000 Sq Feet

2014



Association with
Amber Enterprises

2018



Setup Dedicated
production lines for
Smart Electronics

2021



Factory Setup
Chennai
100,000 Sq Feet

2022



Factory Setup
Noida SE Div,
100,000 Sq Feet

2023



Association with
Ascent Circuits

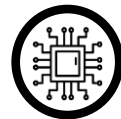
2024



Electronics for Aircon, Washing
machines and Microwave ovens



Electronics for
LCD and LED TV



Electronics
R&D
Established



Smartwatch & Speaker
Assembly started



Telecom Products
(ONT & RRH) Assy.
started



Electronics for
Smart Meter & Set-top
Box



Electronics for
EV 2 Wheelers,
Defence and Solar
Inverters

PAN INDIA ELECTRONICS DIVISION

ILJIN (Greater Noida)

Established : 2001 / 2010
Total Area : 1,20,000 Sq. feet
Buildup Area : 1,00,000 Sq. feet
Total Number of Employees : 750

ILJIN (Noida)

Established : 2023
Total Area : 1,20,000 Sq. Feet
Buildup Area : 1,00,000 Sq. Feet
Total Number of Employees : 400

Greater Noida
R&D Centre

EVER (Pune)

Established : 2004
Total Area : 1,30,000 Sq. Feet
Buildup Area : 80,000 Sq. Feet
Total Number of Employees : 450

Bangalore
Sales Office

Ascent (Hosur)

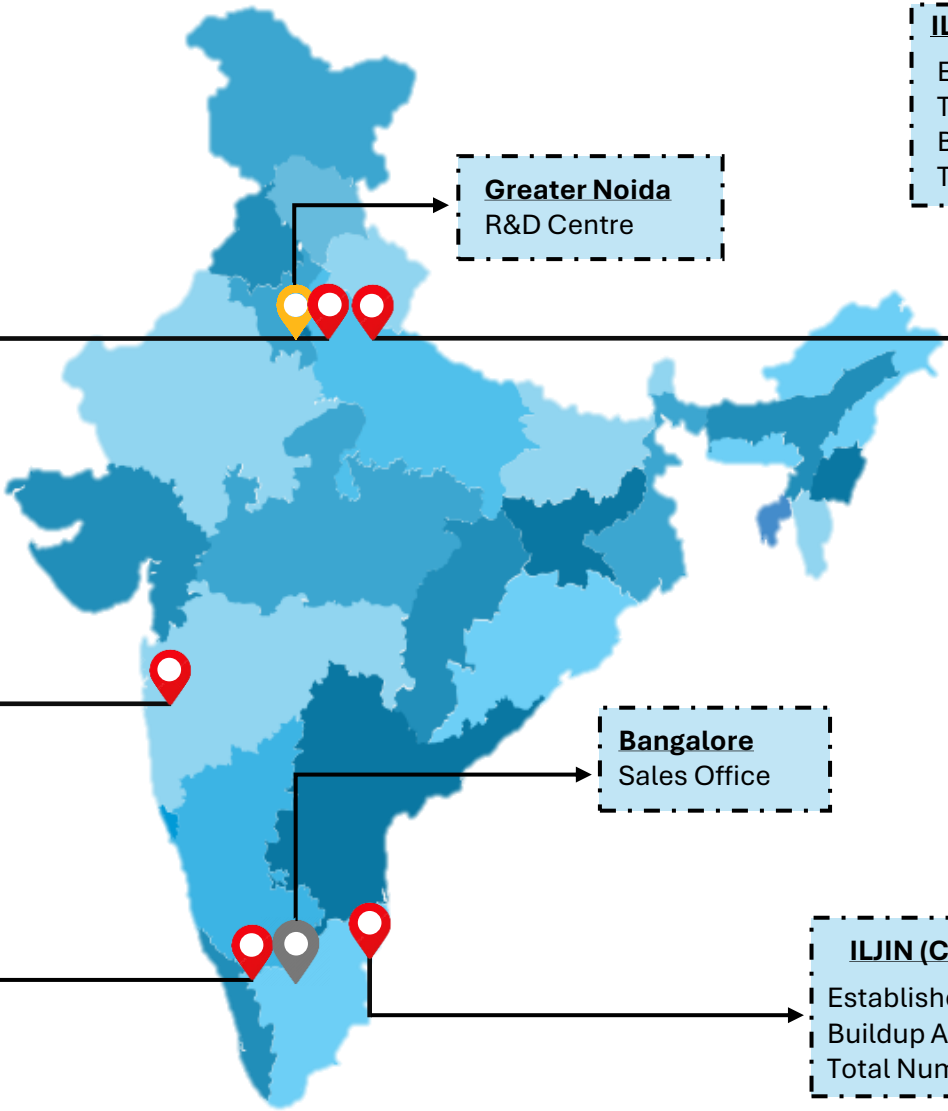
Established : 2002
Buildup Area : 3,50,000 Sq. Feet
Total Number of Employees : 300

ILJIN (Chennai)

Established : 2022
Buildup Area : 1,00,000 Sq. Feet
Total Number of Employees : 350



ASCENT
CIRCUITS



ELECTRONICS DIVISION - PCBA



Facility	ILJIN – Greater Noida(1)	EVER	ILJIN- Chennai	Total
SMT Lines	10	7	5	22
AI Lines	6	3	3	12
MI Lines	12	6	4	22
Coating Lines	5	3	3	11
Coating Type	Conformal, Urethane and UV	Conformal and Urethane	Conformal coating	Conformal, Urethane and UV
Inspection Facilities	SPI , AOI , ICTs, FCTs, XRF , X Ray , Etc.	AOI , ICTs, FCTs, X Ray ,SPI Etc.	AOI , ICTs, FCTs, X Ray ,SPI Etc.	AOI , ICTs, FCTs, XRF , X Ray ,SPI Etc.

ELECTRONICS DIVISION – SMA Mounting capabilities



HIGH SPEED SMT LINE



High Speed Printer



3D SPI



Chip Mounter



IC Mounter



3D AOI



Reflow Oven

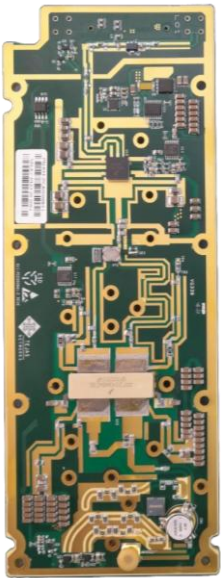


3D AOI

Mounter	NPM-D3A		NPM-D3A		NPM-D3A		NPM-D3A		NPM-TT2	
Head Type	16	16	16	16	16	16	8	8	3	3T
Component Size	02015~6x6x3mm						32x32x12mm		120x90x30mm	
CPH	92000		92000		92000		43000		14400	
Total CPH	3,33,400									
Accuracy	Printing : ±4 μm, Placement : ±30 μm/chip									
BGA Size and Spec	Size: 2x2mm ~ 90x90mm, Ball Pitch: 0.3mm ~ 1.5mm, Ball Count: 4096									

PCB Dimension	50 x 50 mm ~ 490 x 510 mm
---------------	---------------------------

Reflow Oven	Nitrogen Enabled, 12-heating and 3-Cooling Zone
-------------	---





ILJIN Chennai.



April-2025

HIGH SPEED SMT LINE



Vacuum Loader Solder Printer SPI Moulder Moulder Moulder Multi Moulder Pre AOI NG Buffer Multi Zone Reflow Oven Cooling Conveyor Post AOI Unloader

* Other facility



▪ X-ray ▪ Laser Marking



▪ N2 Generator ▪ Nozzle cleaner ▪ Stencil Cleaning ▪ BGA Rework Station ▪ PCB Router

Particulars	Unit	Rated	Std.	Line	Inst.Date	Machine	Model	Mfg.	No.of module	Rated CPH	Equip. Std CPH
Equipment CPH	Nos.	10,74,800	4,64,314								
Daily working Hrs.	Hrs.	22	22	Line-1	May'22	Chi.Mtr	SM471	Hanwha	2	156000	67860
Days in a Month	Days	26	26			Multi.Mtr	SM481	Hanwha	1	48000	20880
Monthly Capacity	Million Points	615	266	Line-2	Oct'22	Chi.Mtr	SM471	Hanwha	2	156000	67860
Annual Capacity	Million Points	7,377	3,187			Multi.Mtr	SM481	Hanwha	1	48000	20880
				Line-3	May'23	Chi.Mtr	NPMD3A	Panasonic	4	368000	160080
						Multi.Mtr	NPMTT2	Panasonic	1	43000	18705
				Line-4	Dec'23	Chi.Mtr	NPMD3A	Panasonic	4	368000	160080
						Multi.Mtr	NPMTT2	Panasonic	1	43000	18705
				Line-5	Dec'24	Chi.Mtr	NPMD3A	Panasonic	4	368000	160080
						Multi.Mtr	NPMTT2	Panasonic	1	43000	18705
				Line-6	Apr'25	Chi.Mtr	NPMD3A	Panasonic	4	368000	160080
						Multi.Mtr	NPMTT2	Panasonic	1	43000	18705
				Line-7	Sep'25	Chi.Mtr	NPMD3A	Panasonic	4	368000	160080
						Multi.Mtr	NPMTT2	Panasonic	1	43000	18705
Total CPH										24,63,000	10,71,405

Extensive Manufacturing facilities

AI



Sequencer



Eyelet Machine



Axial Combi



Radial Combi

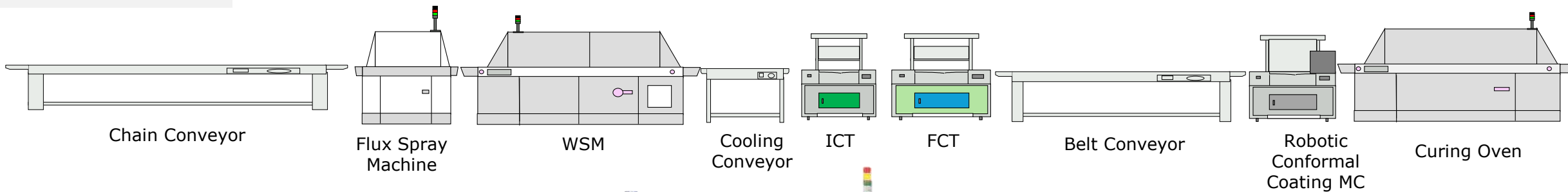


Particulars	Unit	Rated	Std.
Equipment CPH	Nos.	1,06,000	1,06,000
Daily working Hrs.	Hrs.	22	22
Days in a Month	Days	26	26
Monthly Capacity	Million Points	61	61
Annual Capacity	Million Points	728	728

Line	Inst. Date	Machine	Model	Mfg.	Rated CPH	Line CPH
AI 6- Line	May.22	Eyelet -1	ZX-680G	ZX-680G	34,000	34,000
		Axial Combi - 1	ZHX-A30D-IN	Techwin	32,000	32,000
		Radial - 1	ZHX-R20D-IN	Techwin	20,000	20,000
		Radial - 2	ZHX-R20D-IN	Techwin	20,000	20,000
		Total			1,06,000	1,06,000

Extensive Manufacturing facilities

MI



Line	Inst. Date	Rated UPH	Monthly Capa.
MI Line-1	May.22	300	1,63,800
MI Line-2	Oct.22	350	1,91,100
MI Line-3	May.23	350	1,91,100
MI Line-4	Oct.24	340	1,81,100
MI Line-5	Oct.24	300	1,63,800
MI Line-6	Oct.24	300	1,63,800
Total			1054440



Spray Fluxer Machine



Wave Soldering Machine



Advance In-Circuit Testers



Functional Process Testers



High Precision Coating Machine



V-Cut M/C



Conformal Coating Oven



Home Appliance



Out Door Unit
PCBA



Out Door Unit
Control Box



In Door Unit PCBA



In Door Unit
Control Box

Telecom



DPU Network PBA



FTU Network PBA



CEF-12 Network
PBA



RAC Network PBA

Automobile



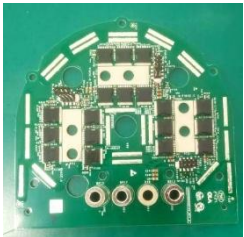
Cluster
controller
Board



Main PCB



SUB PCB



Power Board



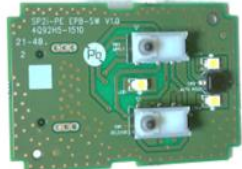
Control Board



Current sensor
Board



Power Window PBA



Premocon

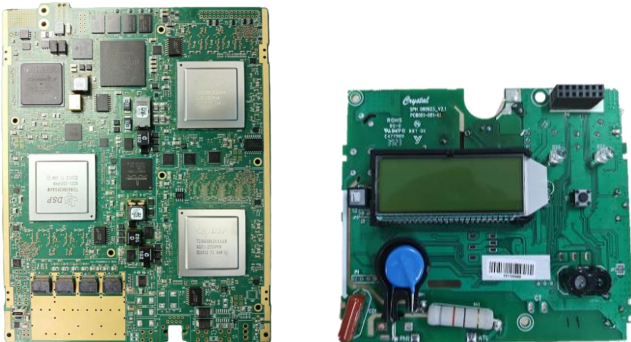
BOX Build – Backward Integration



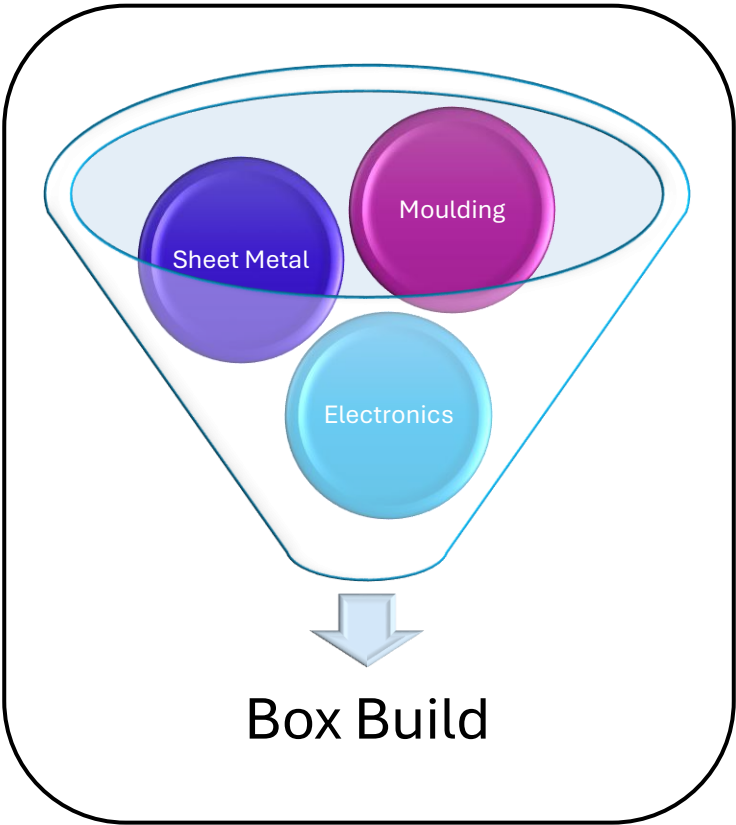
Plastic Moulding



Sheet Metal and Paint parts



Electronics



Box Build

Press Machine:	250+
Moulding Machine:	300+
SMT Lines:	22



Wearables & Hearables



Smart Coach Panels



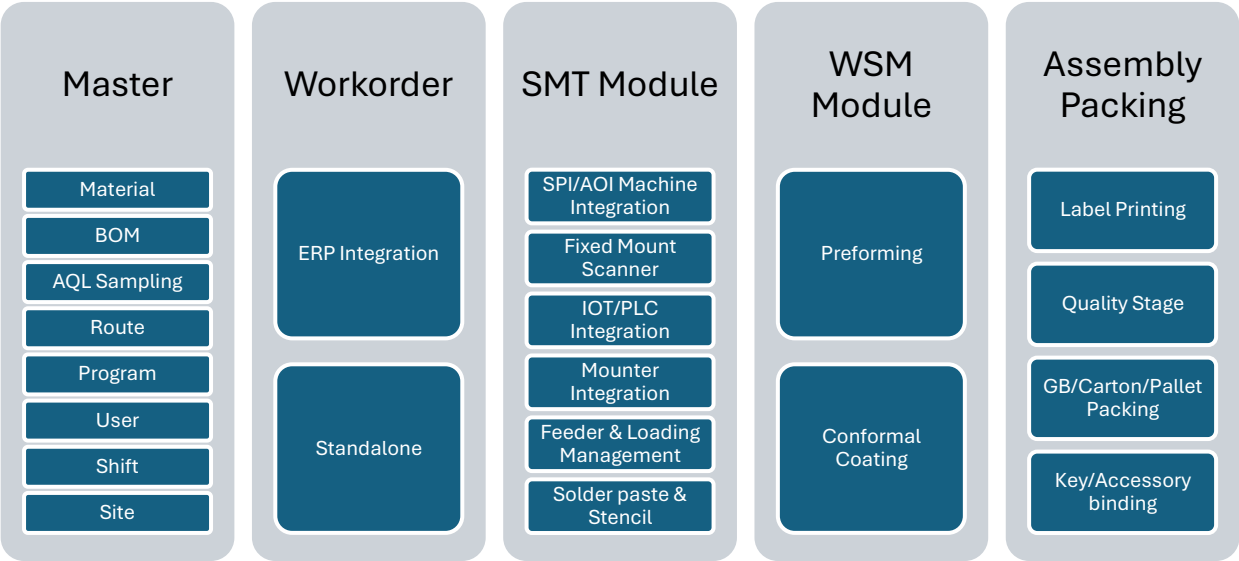
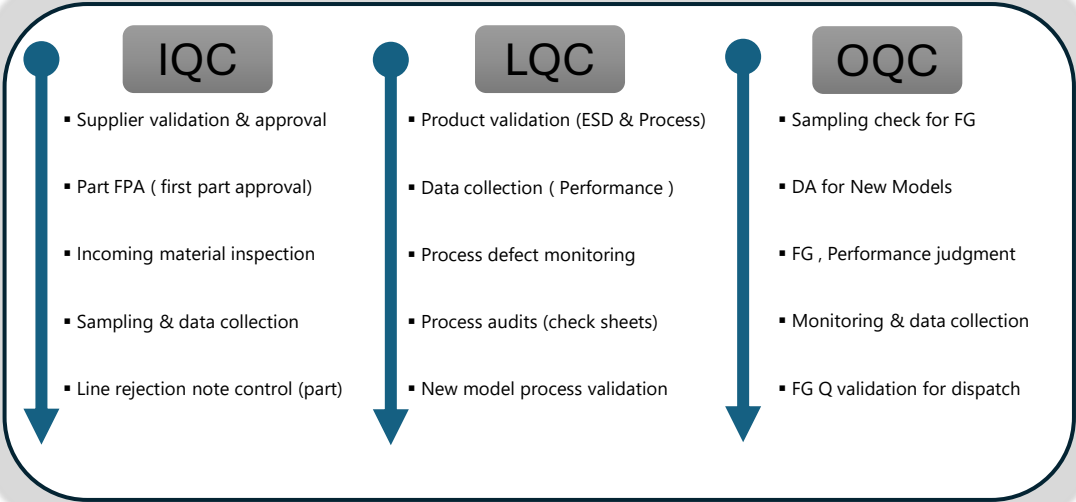
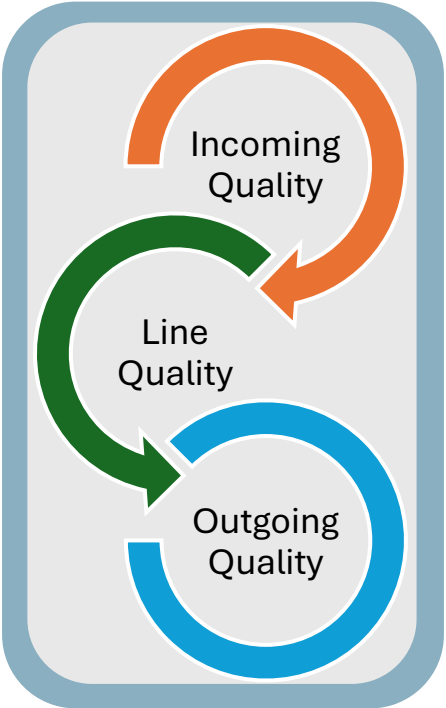
ONT Routers



Automotive Telematics Box

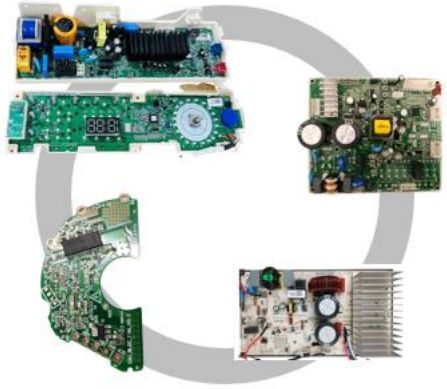
Quality Process

Quality Assurance



Existing Product lines

Consumer Durables



Panasonic



IFB

GENERAL

SAMSUNG

HITACHI
Inspire the Next

VOLTAS



Telecomm



PROSE
a Rosenberger Company



dish

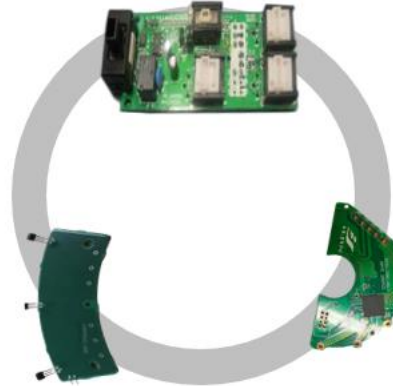
Smart Electronics



ambrane

beatXP

Automobile



Industrial/Defence



ecozen

ESG

✓ **Committed to increase use of renewable power from 15% to 25% by Yr-2025**

✓ **Recycling 93% of the water used in fabrication of PCBs**



✓ **Target to increase female workforce from 10% to 25% by Yr-2025**

✓ **Rain water harvesting capacity increase by 10% every year**

✓ **Continuous increase in use of reusable packaging to customers**



THANK YOU

Amber Enterprises India Limited

Universal Trade Tower, 1st Floor, Sector 49,
Sohna Road Gurgaon- 122018, Haryana, India

P: +91 124 392 3000

E: info@ambergrouppindia.com

www.ambergrouppindia.com

